



St. Catherine of Siena Ft. Thomas, Kentucky

State of the Parish
Address

January 27, 2010
McCrystal Hall



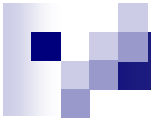
Agenda

- Opening Prayer
- State of the Parish
 - Financial
 - Other
- Goals (Fr. Stef)
- Closing Prayer

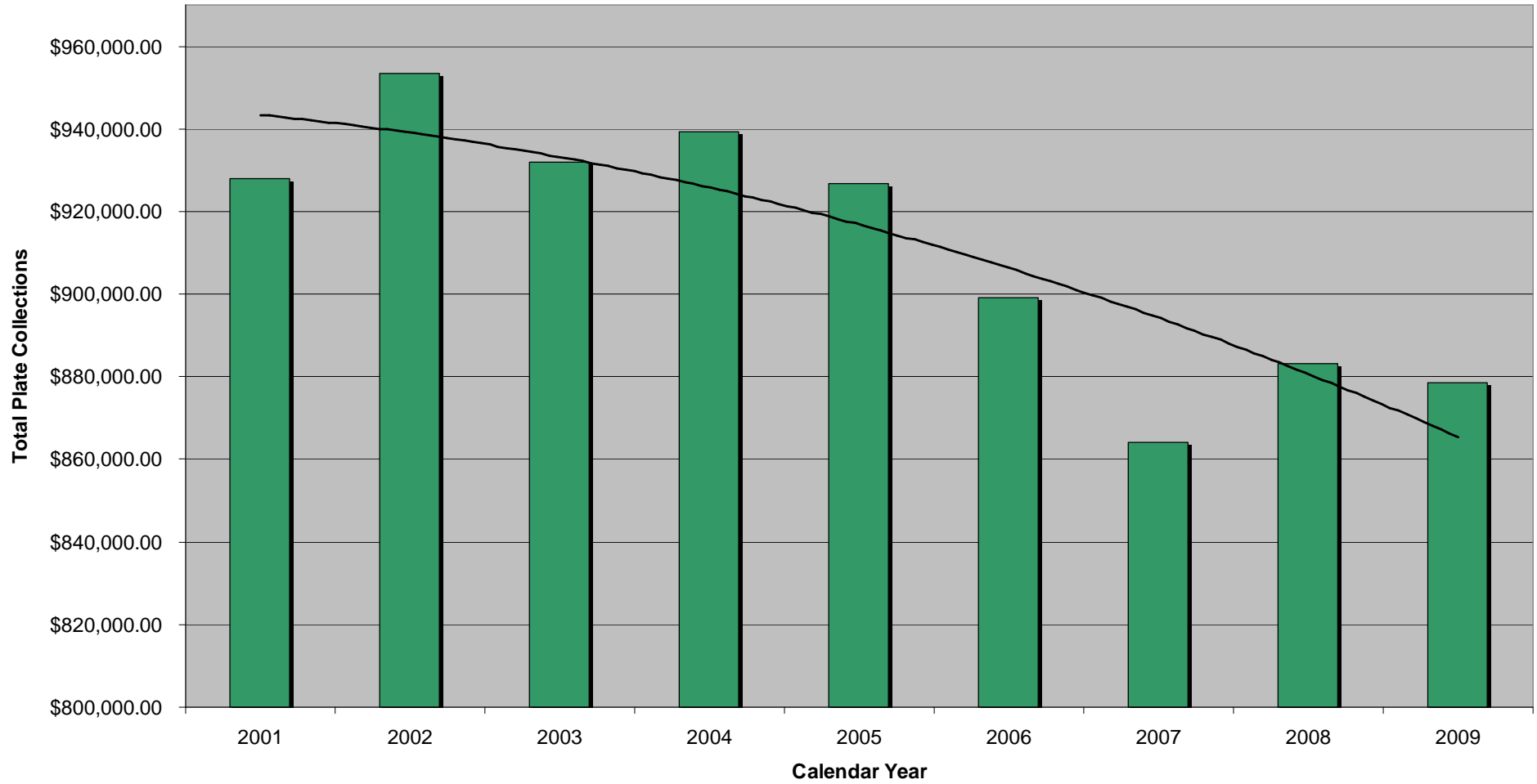


Finances

- Fiscal year ended 6/30/09
- Current financial position thru 12/31/09
- Weekly Offertory analysis
- Income Analysis

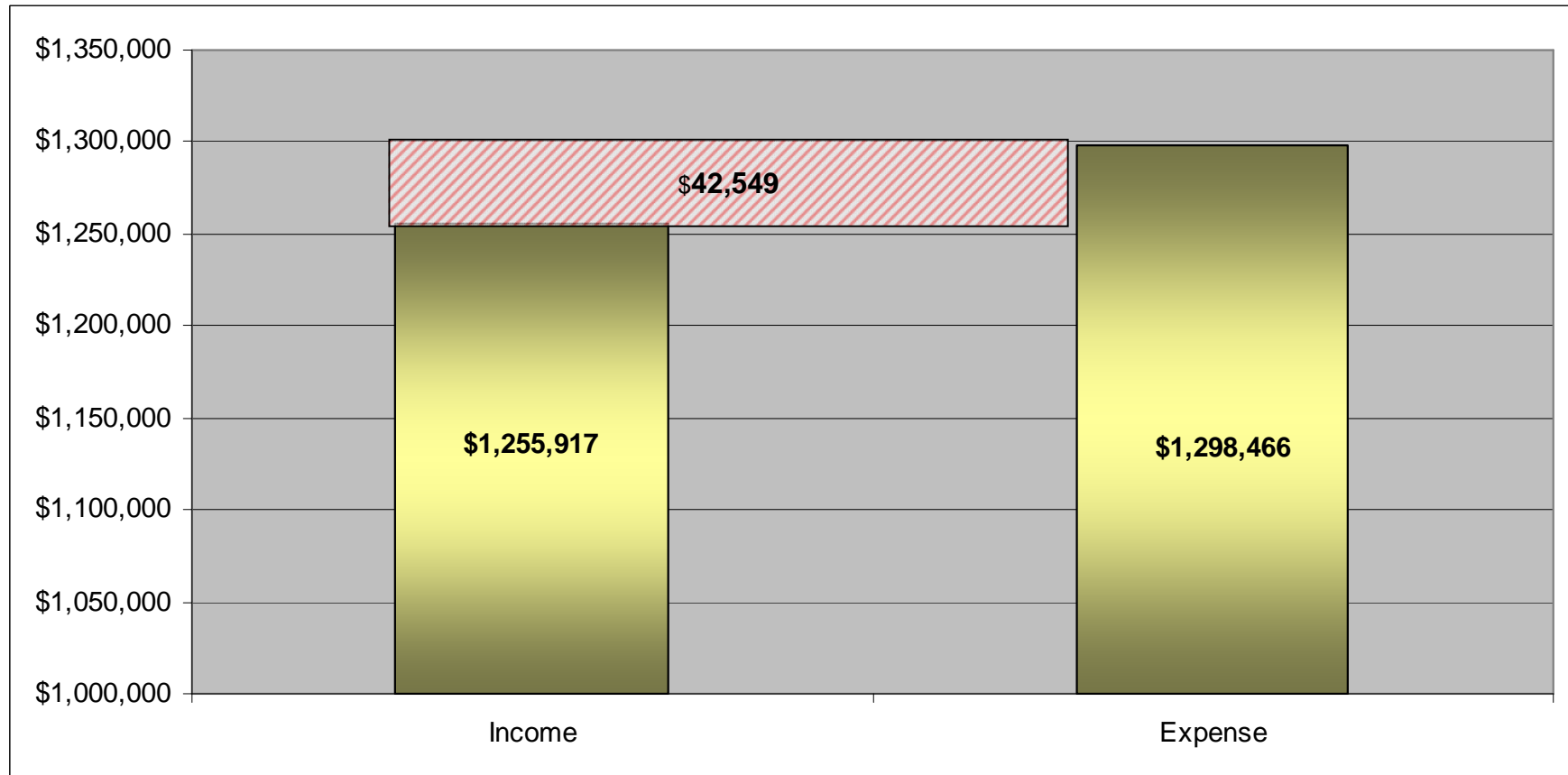


Offeratory Collection Annual Trendline (Calendar)
January 1 - December 31

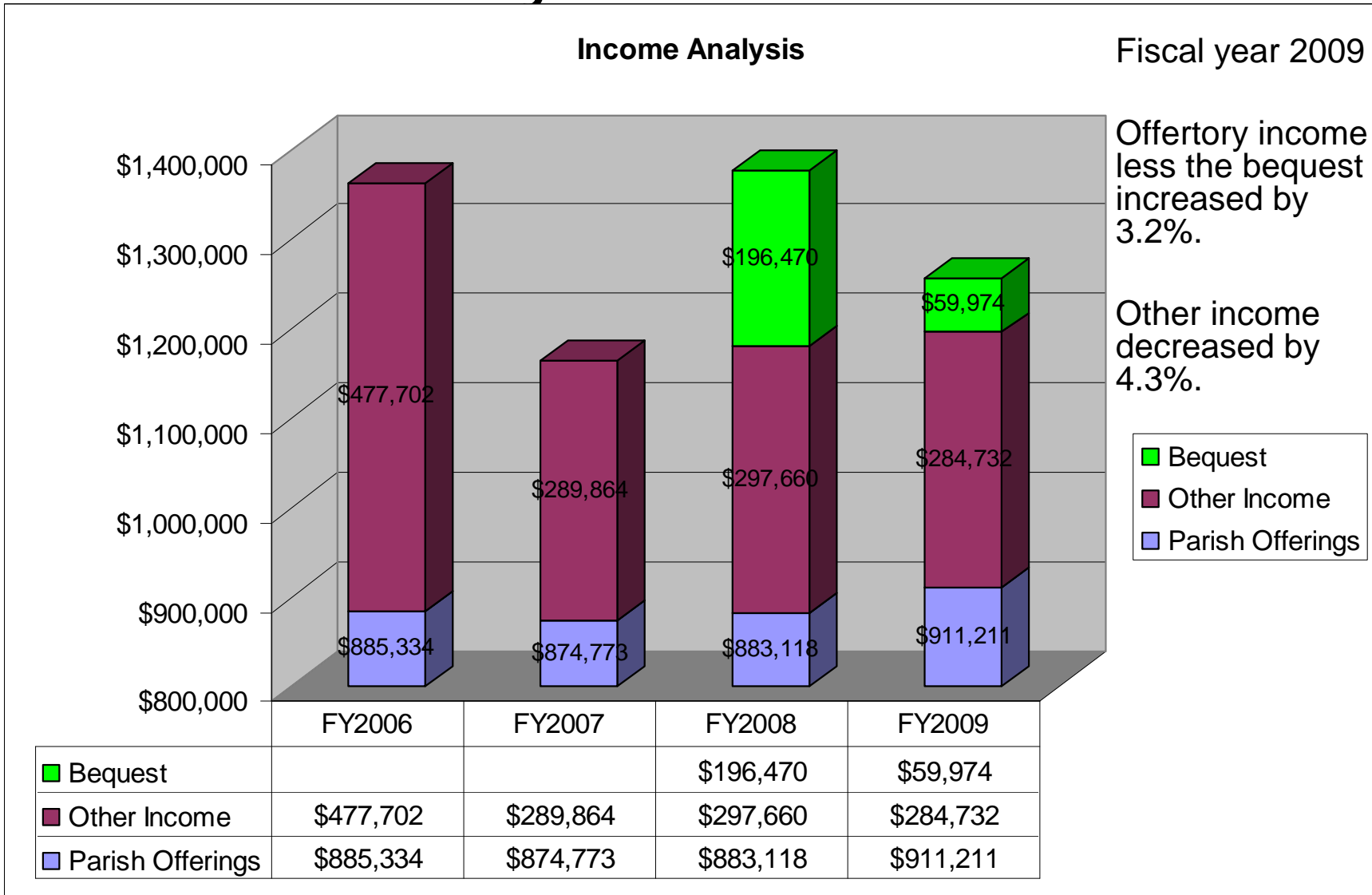


Income vs. Expense

July 1, 2008 – June 30, 2009



Income Analysis

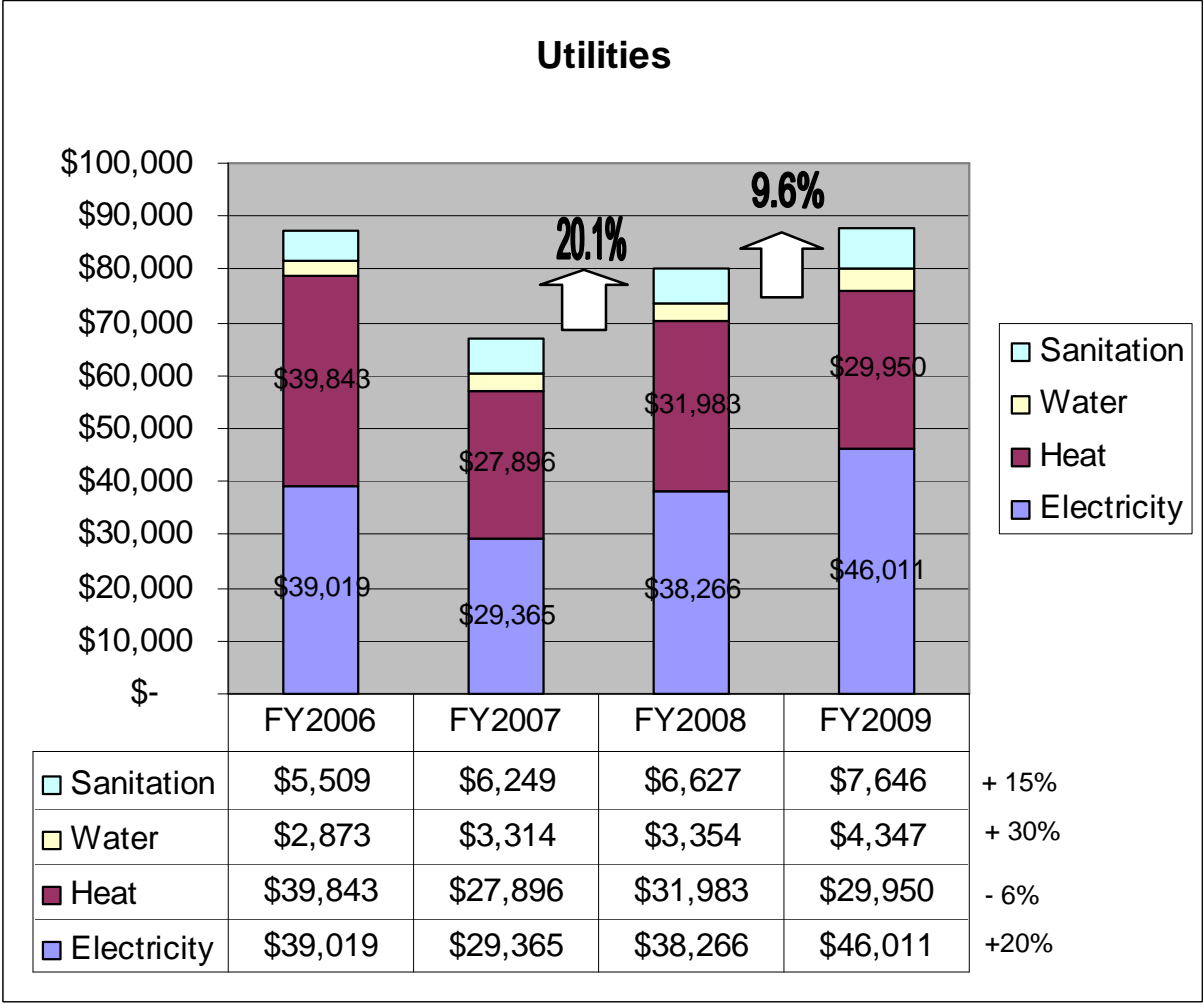


St. Catherine of Siena				
Fund Raising Events				
Fiscal Year Ended June 30, 2009				
<u>Event</u>	<u>Date</u>	<u>Gross Receipts</u>	<u>Expenses</u>	<u>Net Receipts</u>
Love Boat	9-Feb	\$ 37,692.75	\$ 9,098.58	\$ 28,594.17
Festival	Jun-09	\$ 57,553.10	\$ 24,457.78	\$ 33,095.32
Shopping Club (Scrip Program)	Continual	\$ 143,768.47	\$ 127,859.32	\$ 15,909.15
Social Life Events (Fish Frys)	Lent 2009	\$ 3,684.19	\$ 1,023.76	\$ 2,660.43
Walk A Thon	May-09	\$ 7,963.50	\$ -	\$ 7,963.50
School Play	Jan-09	\$ 5,600.26	\$ 2,770.80	\$ 2,829.46
Flower Sale	May-09	\$ 2,310.95		\$ 2,310.95
Merchant Rebates (skyline, Target, etc)	Continual	\$ 1,225.24		\$ 1,225.24
		\$ 259,798.46	\$ 165,210.24	\$ 94,588.22

Utilities Review

Utilities costs increased over 20% in FY08.

Utilities increased 9.6% in FY09



How was Parish Money Spent thru 6/30/09?

•St. Catherine School	52%
•Diocesan Assessments & Offertory Program Sharing	12%
•Salaries (non-school)	17%
•School & Parish Plant Utilities/Maint	11%
•Capital Improvements	2.5%
•Pastoral Service & Admin.	2.5%
•Worship	1%
•Religious Education	1%
•Rectory Expenses	1%

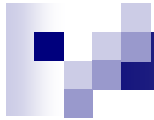


Current Fiscal Year Progress:

The following slides represent
Income and Expenses from
July 1, 2009 through
December 31, 2009

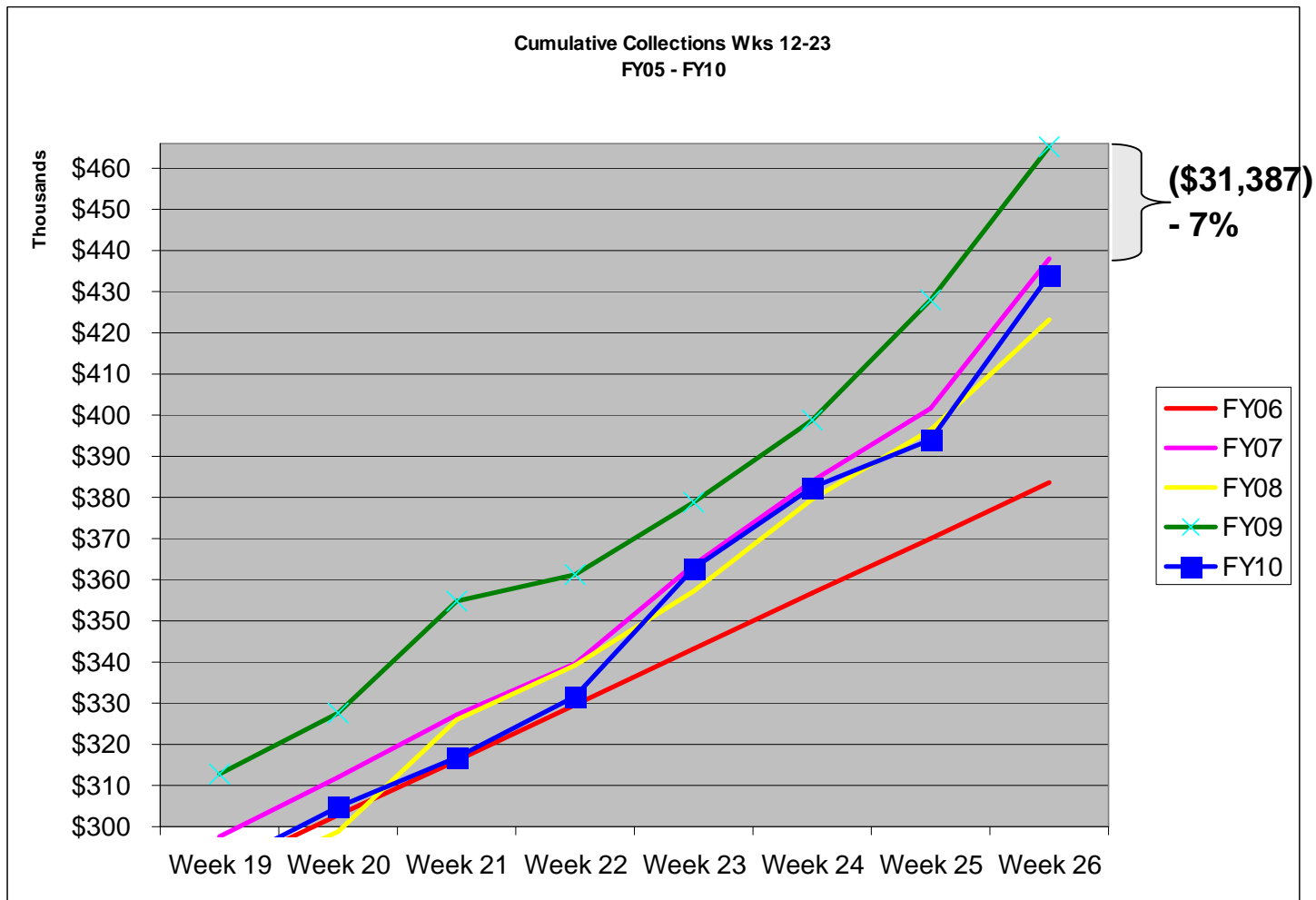
July thru December Financial Progress

		Jul - Dec 09	Budget	Annual Budget
Income				
	3100 - Offertory Collections	433,930.10	468,415.00	915,000.00
	3110 - Holy Day Offerings	22,660.37	28,500.00	40,000.00
	3120 - Memorials	14,547.00	2,250.00	4,500.00
	3200 - Fund Raising Events	28,295.19	19,000.00	113,000.00
	3220 - Rental of Parish Property (Net)	356.83	780.00	1,500.00
	3235 - Kindercare Income (Net)	3,871.49	500.00	900.00
	3300 - School Tuition	127,789.00	108,620.00	208,335.00
	3400-10 - Investment Income - Checking	216.69	600.00	1,200.00
	3501 - Non-Revenue Receipts	20.70	0.00	0.00
	3610-00 - School Registration Fees	26,140.00	24,400.00	24,400.00
	3610-01 - CCD Registration Fees	10,295.00	10,000.00	10,000.00
	3610-02 - Preschool Religion Fees	0.00	500.00	500.00
	3610-03 - Vacation Bible School (Net)	436.48	500.00	500.00
	3680 - Social Concerns (See Exp. 7760)	400.00	0.00	0.00
	3700 - Restricted Donations	36,099.07	12,796.60	21,000.00
	3720 - Messenger Donations	19.00	0.00	1,500.00
	3850 - DPAA - Over Goal	0.00	1,500.00	5,000.00
Total Income		705,076.92	678,361.60	1,347,335.00



Expense	Jul - Dec 09	Budget	Annual Budget
4000 · Pastoral Service & Admin	17,180.50	18,580.00	29,500.00
4100 · Salaries & Fringe Benefits	125,509.94	123,710.51	261,373.00
5000 · Worship	6,305.79	6,830.00	8,100.00
6000 · Religious Education	6,579.10	6,025.00	10,200.00
6330 · CCD PTO Expense (Net)	(87.08)	500.00	1,500.00
6600 · Parish School	366,799.89	330,656.39	667,446.00
7550 · School PTO Expense (Net)	2,475.63	2,250.00	5,000.00
7760 · Social Concerns Expenses	600.00	1,500.00	2,500.00
7900 · Community Event Expenses	526.74	400.00	500.00
8000 · Rectory Expenses	4,574.19	6,700.00	15,000.00
8500 · Parish Plant Operation & Maint.	24,873.84	26,570.00	68,640.00
8900 · School Plant Operations & Maint	26,287.66	30,552.00	72,092.00
9110 · Diocesan Cathedraticum (6.75%)	40,517.00	42,104.48	82,364.00
9111 · Secondary School Assessment(5%)	31,592.00	32,830.28	64,222.00
9115 · Diocesan Offertory Prgm Sharing	0.00	15,000.00	30,000.00
9131 · Elementary Assessment	4,126.50	4,200.00	4,200.00
9132 · Religious Ed - Assessment	1,016.00	0.00	400.00
9200-01 · (Gain) Loss on Investment	(421.87)	0.00	0.00
9250 · Even Exchange Checks	177.15	0.00	0.00
9300 · Capital Expenses	42,061.99	24,298.00	24,298.00
Total Expense	700,694.97	672,706.66	1,347,335.00
Net Income	4,381.95	5,654.94	0.00

Weekly Collections





Parish Budget Process

- Fiscal Year Runs July through June
- Parish Pledges on Calendar Year
- School Registration February
- Finance Committee Plans Parish Budget Each Spring
- BOCE works with Finance Committee to Plan School Budget

Parish Offertory Program Results

Calendar Year	2010	2009	2008
Amount Pledged	\$800,570	\$922,686	\$857,939
Parish Families who Pledged	456	482	396
Parish Families who did not Pledge but Contributed	38 (so far)	100	162
Amount Given from Parish Families who did Not Pledge	\$2,758 (so far)	\$57,870	\$116,443
Amount Pledged plus Amount Given from those who did not pledge	TBD	\$980,550	\$974,382
Amount Received	TBD	\$877,346	\$824,243 84.6%
New Pledges	44	100	145
Increased Pledge Amount	101	125	115
Decreased their Pledge Amount	108	87	111
Pledged Same Amount	203	134	25

2009 Capital Improvements & Repairs

- Connect computer system from church to school under new parking lot
- Blacktop lower parking lot
- Sealcoat & restripe upper parking lot
- Upgrade electric in various areas in school
- Church boiler repairs – Installed Variable Frequency Drive to make motor unit more energy efficient.
- Build & install new shelving for all classrooms in the school (currently in progress)
- New Carpet & Tile in parish center
- Painted the entire school building, McCrystal Hall, parish offices, incl. Choir room, sacristy, restroom, back hall & staircase.
- Built an outdoor shed for playground equipment
- Wired all smart boards in the school
- Installed a ramp threshold at McCrystal Hall Ramp Entrance for easier wheelchair access
- Purchased 30 new folding chairs for McCrystal Hall (3 still missing)
- Installed curbing at fence in upper lot and along ramp side entrance



Capital Improvements needed 2010

- Parish Center Air exchange system needs to be updated – multiple issues with a/c & heating in the parish center – bidding in process - Card Swipe entry system – to maintain parish security - early estimates \$15,000 (need/want)
- New Window Shades for school classrooms – approx \$1,500 for cheapest –current shades are falling apart.
- New Carpet for kindergarten room - \$1,500
- New flooring in hall behind cafeteria where salt was stored – tiles falling apart
- Seal new blacktop and reline as recommended at time of installation to protect longevity of surface. \$1,500
- Computer tables to build in school classrooms - \$2,000 – (Need)



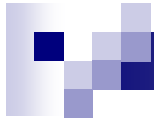
Capital Improvements Wish List 2010 & Beyond

- ❖ School Classroom upgrade – water to artroom
- ❖ Update School Restrooms
- ❖ New windows in school \$150,000
- ❖ Repair & replaster ceiling in back of church
- ❖ Replace ceiling in McCrystal Hall
- ❖ New flooring in McCrystal Hall
- ❖ New flooring on N. Ft. Thomas Side stairwell leading to McCrystal hall
- ❖ Repair Stained Glass in Church
- ❖ Landscaping around parish office



Other Aspects of Parish Life

- Parish Demographics
- School
- CCD
- Parish Organizations/Committees
- Spiritual Life
- Social Life
- Christian Service/Outreach



Parish Demographics



St. Catherine's Families

	2009	2008	2007	2006
Households in Parish	669*	720	745	743
Catholic	402	419	429	432
Mixed	261	301	306	311
Non-Catholic	6	0	10	0

* 33 new families joined the parish in 2010



St. Catherine's Individuals

	2009	2008	2007
Total # of members	2247	2409	2487
Male	1063	1147	1175
Female	1184	1262	1312
Catholic	2141	2271	2323
Non-Catholic	106	138	164



St. Catherine's Ages

Age Group	2009	2008	2007
0 – 4 yrs	122	132	124
5 – 9 yrs	205	216	219
10-14 yrs	205	228	237
15 – 19 yrs	211	204	224
20-39 yrs	544	613	634
40+ yrs	930	972	1048
Unknown	30	44	



Student Enrollment

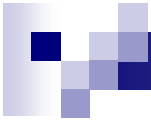
School Year	2009-2010	2008-2009	2007-2008
St. Catherine School	180 94 boys 86 girls	181 98 boys 83 girls	191 101 boys 90 girls
Other Catholic Grade Schools Includes home school	13	8	3
Public Grade Schools	157	166	130
Catholic High School Includes home school for 08-09	70	88	70
Public High School	56	79	97
CCD- Grade School	143	158	151
CCD – High School	11	34	31

Sacraments

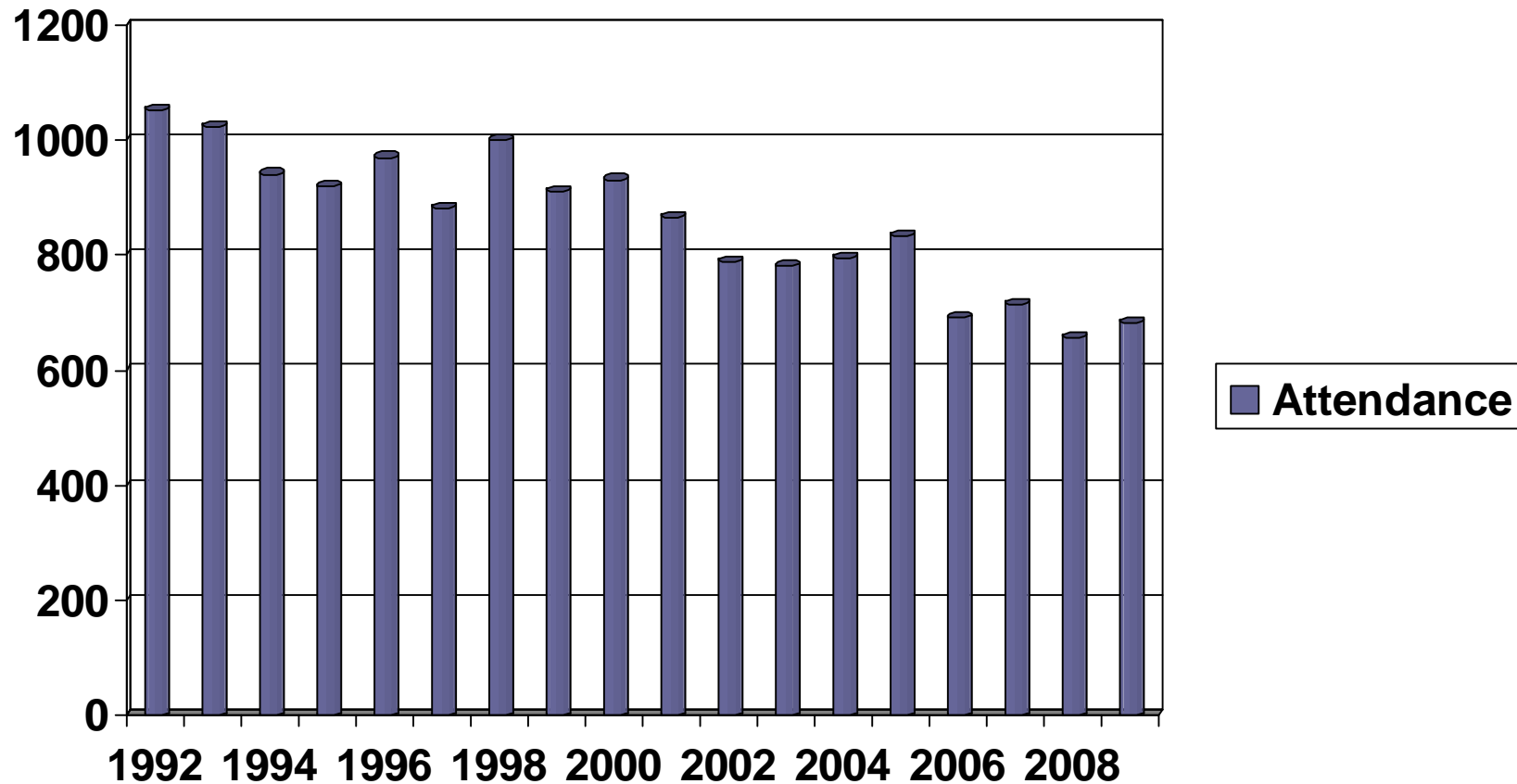
	2009	2008	2007
Baptisms	25 (21 infants, 2 1-7 yrs, 2 over 7 yrs old)	32 (31 infants, 1 over 7 yr old)	21 (20 infants, 1 over 1 yr old)
First Communicants	37	43	47
Confirmandi	36	38	31
Weddings	5 (3 Catholic, 2 mixed)	2 (1 Catholic, 1 Mixed)	4 (2 Catholic, 2 Mixed)
Funerals	10	12	9

First Communion 2009





Mass Attendance





January 27, 2010



St. Catherine School

State of the Parish Address

28



School – Fees and Tuition

- 2010-2011 School Fees & Tuition
 - Non-Refundable Registration Fee: \$150
 - Tuition: \$1350
 - Tuition – Kindergarten: \$675

- Payment Structure
 - Registration Fee
 - 10 Monthly Payments
 - Tuition assistance (F.A.C.T.S.)

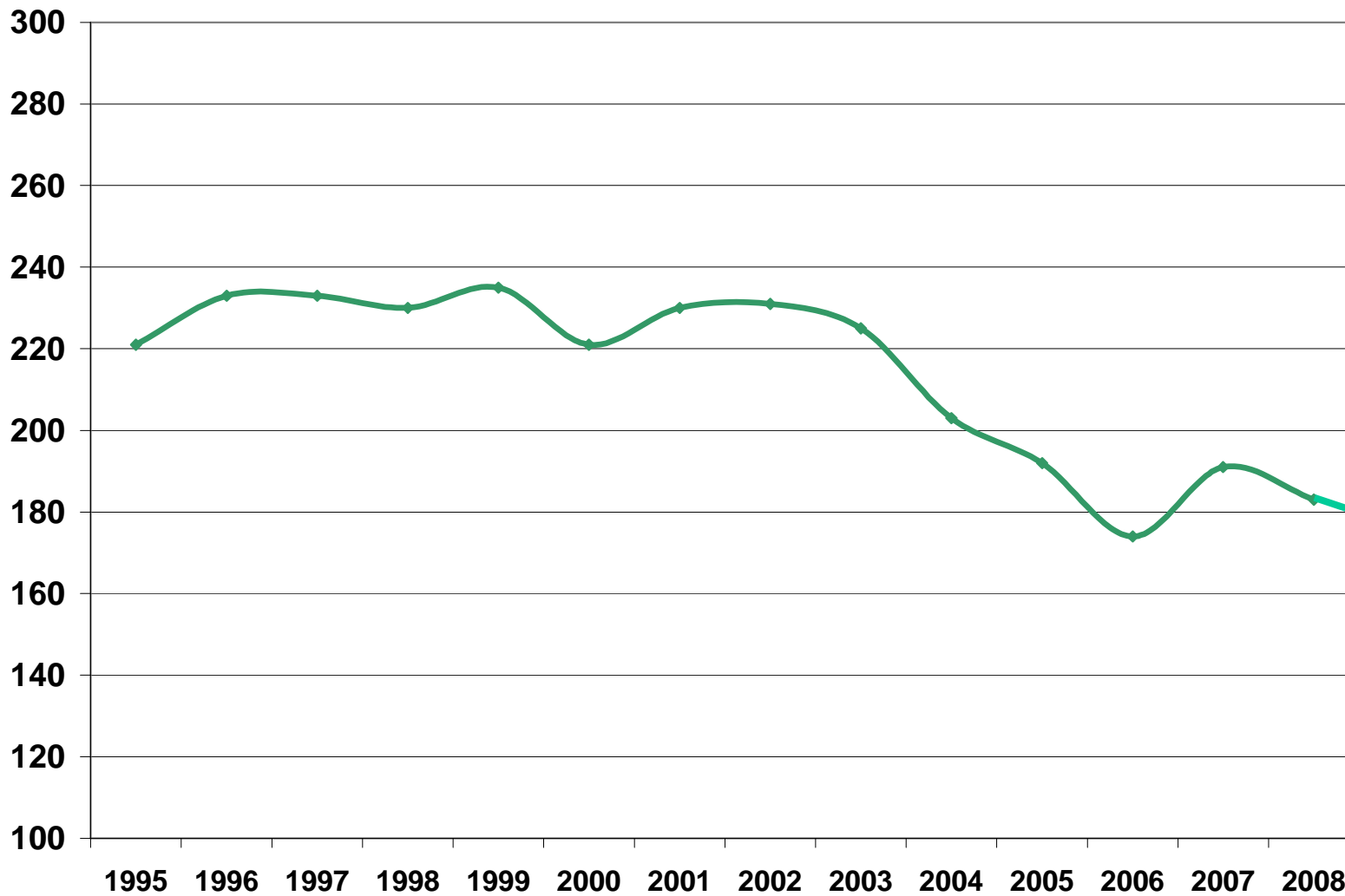
- Tuition Assistance Fund
 - Donations to this fund are always appreciated
 - We are currently assisting multiple families with tuition – more than we have received in donations toward this fund.



St. Catherine School Student Enrollment

School Year	2009-2010	2008-2009	2007-2008
Total	180	181	191
Boys	94	98	101
Girls	86	83	90

Enrollment History





School Highlights

- ***Junior High Governor's Cup Competition***
- ***Scholarships***
- ***Valedictorian***
- ***Play***
- ***New Reading Programs***
- ***Grant Programs***
 - ***Outdoor Classroom***
 - ***Wellpoint – Matching***
 - ***GE – Matching Gift Program***
 - ***Fidelity***
 - ***Service Learning Grant***
- ***Outreach (see slide #48)***
- ***Religion Textbooks***



CCD

- Enrollment (see slide #23)
- Emphasis on content (new textbooks, increased homework and assignments)
- Increased activity of parents in CCD PTO, and increased activity of CCD PTO
- Rosary every week (increase)
- Increased focus on Christian service/outreach (see slide #54)
- High School



Health Ministry

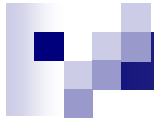
- Blood pressure screening and counseling by RN's after each Mass (11 months)
- Health education by pamphlets at side entrances to church (adult immunization, H1N1, strokes, dietary information)
- Transportation for medical appointments
- Cooks On Call, providing meals to individuals recently discharged from the hospital



Catholic Order of Foresters

■ February

- Story night for children
- Donated pizza for Jr. High Social
- Donated rosaries for 1st Communicants
- Purchased St. Catherine Feast Day bracelets
- Sponsored Parish Pot Luck Barbeque Dinner for St. Catherine Feast Day



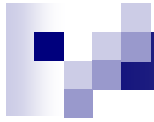
■ May

- Purchased all food for Grandparents' Day luncheon
- Paid for half of pizza for Spirit Night
- Sponsored an ice cream social after May Crowning
- Supplied donuts for Booster sports sign-up



■ June

- Purchased a large out grill for parish use
- Donated a basket for the festival
- Created and ran a “Basketball Hoops” booth for the festival
- Sold glow necklaces and bracelets at festival as a fund raiser
- Planned the Parish Campout, supplied meat for Saturday dinner and organized Saturday games

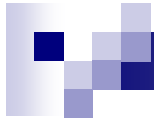


■ August

- Sponsored a Coney Island Day for parish families
- Sponsored a Pancake Breakfast for the parish
- Supplied popsicles for first day of school

■ September

- Supplied all food for the Parish Night Dinner

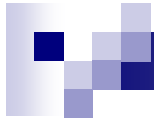


■ October

- Sponsored Cookies and Story Time for K-2nd
- Sponsored Game Night for 3-5th grades
- Supplied the pizza for Jr. High Social

■ November

- Sponsored the reception after All Saints Mass
- Purchased the pizza for the Pep Rally/Basketball Tournament Kick-off



■ December

- Hosted the reception after the Night of Carols
- Sponsored “Lunch with St. Nick”



RCIA

- 1 Candidate
- 1 Catechumen


Spiritual Life



January 27, 2010

State of the Parish Address

42

- 
- Fr. Bob
 - Little Black/White Books – Lent/Easter Season
 - Novena in honor of the Holy Spirit (leading up to Pentecost)
 - Pilgrimage to the Holy Spirit Center
 - Provided bus for parishioners to Chrism Mass and Pro-Life Mass (Cathedral)
 - Evening Prayer during “O” Antiphons
 - Intercessions for priests, Year For Priests
 - Extended Adoration



Christ Renews His Parish

- Women's Weekend: Feb 20 – 21, 2010
- Men's Weekend: Has not yet been scheduled for 2010



Praise and Worship

- Description

- 2009 Speakers

- Fr. Mike Comer (April) “Lord, teach us to pray”
- Fr. Thomas Euteneuer, Exorcist and President of Human Life International (May)
- Fr. Donald Calloway (December) “Former Drug Dealer to Catholic Priest”



Parish Night

- Same purpose, different approach
- Focus of Adult program – Year For Priests
– Sharing Christ's Priesthood
- Parish/Family activities



Social Life

- Burning of the Greens
- Love Boat
- Fish Frys
- Festival and surrounding events
- Parish Fest
- Lunch with St. Nick
- New Members Welcome Breakfast
- All Saints Reception
- Boosters-sponsored games



Christian Service/Outreach



School

- Continues to expand our role in St. Bernard Food Pantry
 - Monthly collection
 - Students deliver and stock the items
 - Clean the pantry

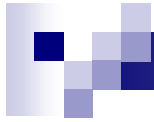


School Outreach, cont.

- Each homeroom created and participates in their own service project
 - Kindergarten – toys for Fr. Beiting’s mission
 - Christmas cards to soldiers in Iraq and abroad
 - Planted beans in garden for St. Bernard pantry
 - Class clean-up of playground



- First Grade – supply Teddy Bears to Police Department for children taken out of dangerous situations
- Second Grade
 - Wrote to “senior friends”
 - Made “no-sew throws” for senior friends

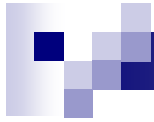


■ Third Grade

- Collected books for St. Bernard Pantry
- Installed bookshelf and created library
- Regularly restock and straighten shelves

■ Fourth Grade

- Maintain the garden, harvesting produce and delivering it to St. Bernard Pantry
- Made lollipops for the pantry



■ Fifth Grade

- Maintain garden, harvesting and delivering produce to St. Bernard pantry
- Collected ring tops from cans; one student delivers them each month to soup kitchen for recycling

■ Student Council

- Adopted a family from Brighton Center



- Junior High

- Makes monthly birthday cards for the vets in Ft. Thomas



CCD

- Insights Retreat
- Alternative Christmas Fair
 - Hosea House \$433.00
 - Madonna House \$455.00
 - Welcome House \$201.00
 - Be Concerned \$280.00
 - St. Bernard Food Pantry \$282.30
 - Fairhaven Rescue Mission \$255.00



Foresters

- Donated \$250 to remodel St. Bernard's food pantry (February)
- Sponsored the “stuff a bus” campaign to collect food for St. Bernard's pantry – coincided with school's “Feeding God's Children” theme
- Supplied “Feeding God's Children” t-shirts to all school children – visual reminder of monthly food collection (May)



Foresters, cont.

- Donated coloring books and crayons to St. Bernard pantry, along with \$135 collected from Lunch with St. Nick



Jesse Tree

- CareNet of NKY, 60 tags
- Madonna House, 54 tags
- VA Hospital Ft. Thomas, 33 tags
- Birthright of Greater Cincinnati, 68 tags
- Glenmary Mission Vanceburg, KY, 208 tags
- Women's Crisis Center Covington, 95 tags
- Catholic Charities, 50 tags
- 568 tags, 78 not taken, 490 gifts given



Charitable Collections

- Picture of groceries collected



Diocesan

■ Holy Father (Peter's Pence)	\$1,499.00
■ Opportunities for Life	\$ 888.00
■ Retired Religious	\$6,751.09
■ Domestic Needs	\$1,768.00
■ Education of Seminarians	\$2,687.50
■ Missionary Co-op	\$1,485.15
■ International Needs	\$1,540.00
■ Total	\$16,618.65



Thanksgiving Collection

- Delivered to St. Bernard Pantry

- Cash \$130.00

- Food Much



Good Friday

- Throughout Lent parishioners take brown paper bags and fill them according to the tags attached to them. These go to different social service agencies to replenish their stock. Last year we filled just under 400 grocery bags full of food and related products.



Good Friday, cont.

- Echo/Hosea House
- St. Bernard Food Pantry
- Brighton Center
- Welcome House
- Madonna House
- IHN



Goals 2009

- ✓ Clean up parish family database system
- Hold parishioners accountable to “active parishioner” status
- Integrate new members more quickly into parish
- ✓ Parish outreach



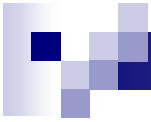
Goals, cont.

- Encourage/support tithing (spiritual, not financial issue)
- ✓ Parish e-mail communication system



Goals 2010

- Employee Manual
- Published Wedding Guidelines
- Ecumenism
- Evangelization



Questions

